

**RAILKING**<sup>®</sup>  
By M.T.H. Electric Trains

## 19th Century Caboose

30-7724

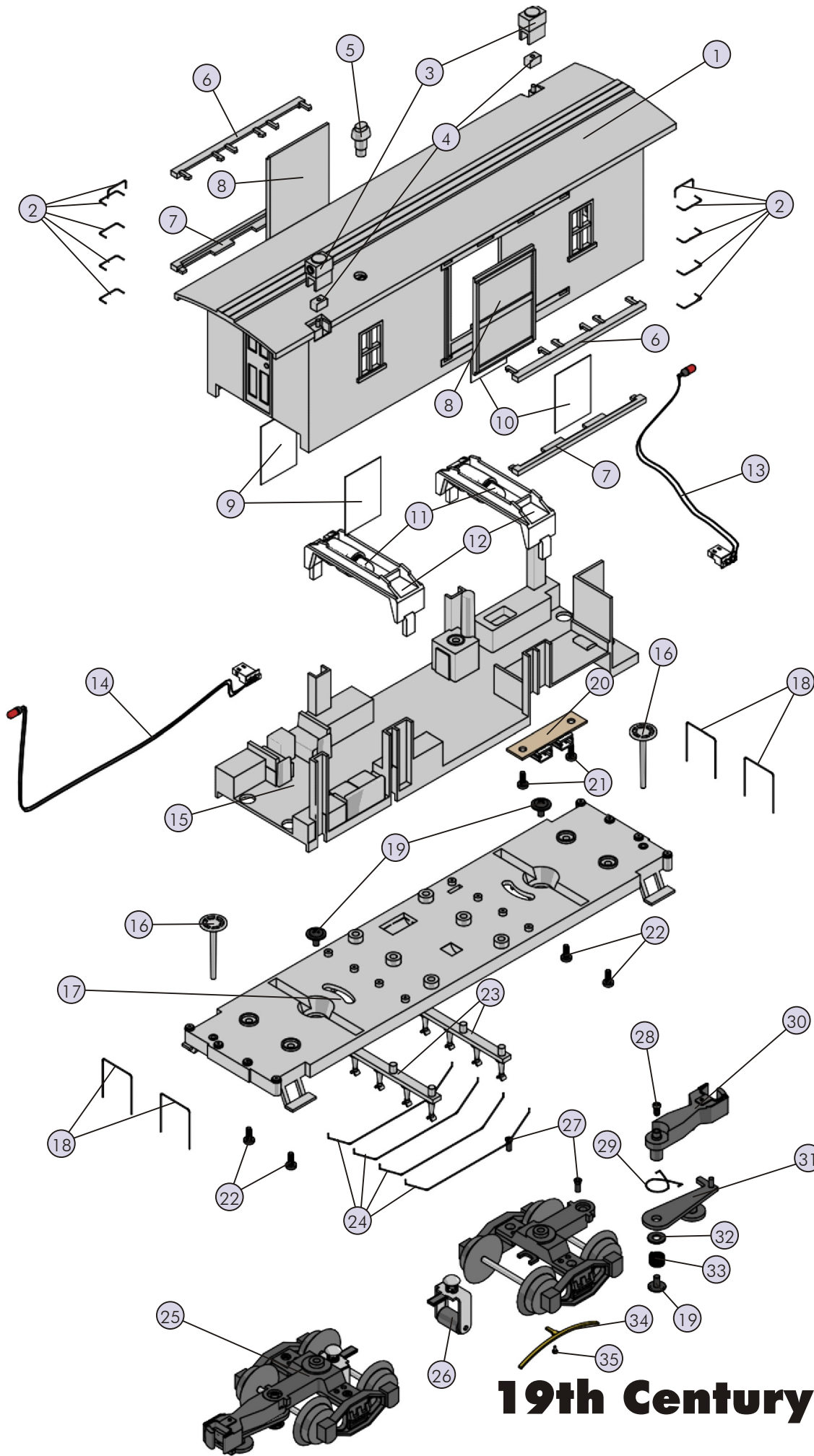


# 19th Century Caboose

## C a b o o s e P a r t s

Name and Number	Part #	\$Price Per Unit
1.) Shell ( W.&A.R.R. )( # 58 )	HA-4200001	*20.00
2.) Handrail ( 9.0mm long )	HA-4200002	1.00
3.) Marker light housing	HA-4200003	2.00
4.) Marker light holder	HA-4200004	1.00
5.) Smoke stack	HA-4200005	2.00
6.) Door runner ( top )	HA-4200006	2.00
7.) Door runner ( bottom )	HA-4200007	2.00
8.) Door ( # 58 )	HA-4200008	2.00
9.) Window lens ( 26.0X35.0mm )	FA-4200009	1.00
10.) Window lens ( 23.0X35.0mm )	FA-4200010	1.00
11.) Bulb ( 18V )( grain of wheat )	CG-0000017	1.00
12.) Light holder	CH-0000017	2.00
13.) Bulb ( L.E.D. )( red ) ( 120.0mm long )	CC-0000012	3.00
14.) Bulb ( L.E.D. )( red ) ( 185.0mm long )	CC-0000013	3.00
15.) Interior detail	HA-4200009	*10.00
16.) Brake wheel (27.6mm long)	HA-4200010	1.00
17.) Chassis	GB-4200001	*10.00
18.) Handrail ( 17.7X22.5mm )	HA-4200011	2.00
19.) Screw ( M3X5.0mm ) ( washer head )	IA-0000268	0.15
20.) Crossover board	AG-0000020	4.00
21.) Screw ( M2.6X6.0mm )( w/ plastic cutting threads )( roundhead )	IA-0000206	0.15
22.) Screw ( M3X8.0mm )( w/ plastic cutting threads )( roundhead )	IA-0000204	0.15
23.) Tension rod support ( 50.0mm long )	HA-4200012	2.00
24.) Tension rod	HA-4200013	2.00
25.) Truck (2 axle)(leaf springs) ( black truck sides )( complete w/ pick-up )	DA-0200003	11.00
26.) Pick-up	BD-0000062	5.00
27.) Screw ( M2.5X6.0mm )( flathead )	IA-0000178	0.15
28.) Screw ( M2X4.0mm )( washer head )	IA-0000080	0.15
29.) Spring ( centering )	IE-0000036	0.50
30.) Coupler	DD-0000015	3.00
31.) Armature	DD-0000014	1.00
32.) Insulator washer ( 5.0X10.0X0.3mm )	ID-0000065	0.15
33.) Spring ( 6.0X8.0mm )( w/ 0.4mm thick wire )	IE-0000035	0.50
34.) Ground strap	II-0000006	0.15
35.) Screw ( M2.5X4.0mm )( roundhead )	IA-0000023	0.15

\*Requires Exchange



# 19th Century Caboose